

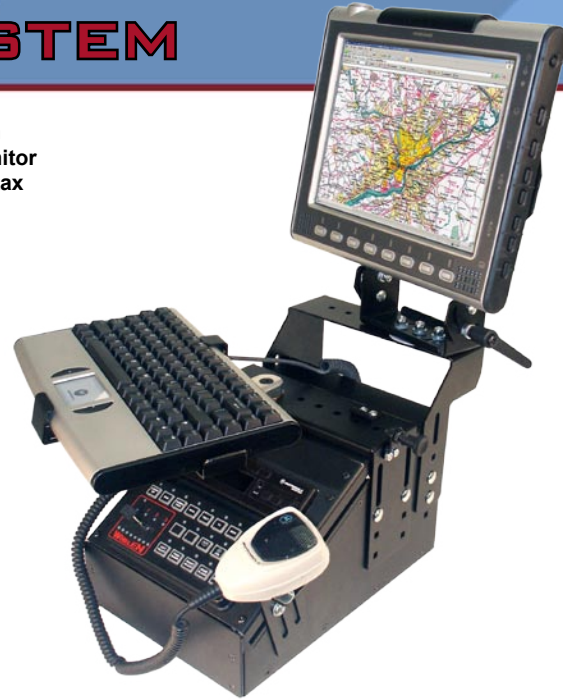


STOUT MOUNT™ EQUIPMENT CONSOLE

IDEAL MOUNTING SYSTEM



C-SM-830 shown with Motorola MW800 monitor & keyboard, and Pentax PocketJet printer



- Low profile, safe and strong.
- Specifically designed for sturdy, compact computer mounting.
- 2 piece housing allows for adjustable height (Expands 1" or 2" to provide additional internal mounting depth)
- Independent keyboard and monitor brackets allow installer to customize height positioning.
- Swing arm feature provides easy and comfortable positioning of keyboard or laptop.
- Mounts to vehicle hump bracket or trak mount base, ordered separately (with trak mount recommended)
- Accepts all Consolidator® equipment brackets & filler plates (Up to 8").
- Modular design allows for add-on options such as:
 - Slide out printer mount (C-PMS)
 - Low profile console extension (keeps control heads below seats) (C-SM-600)
 - Cup holder, lighter outlets, & most Havis-Shields Consolidator® accessories.

HEAVY-DUTY SWING ARM

The heavy-duty swing arm is a perfect mount for laptop computers or keyboards. The height is set at installation so there is no need for up/down mechanisms that are rarely used. The swing-arm is safely locked into stored position or released for use by a spring lock.



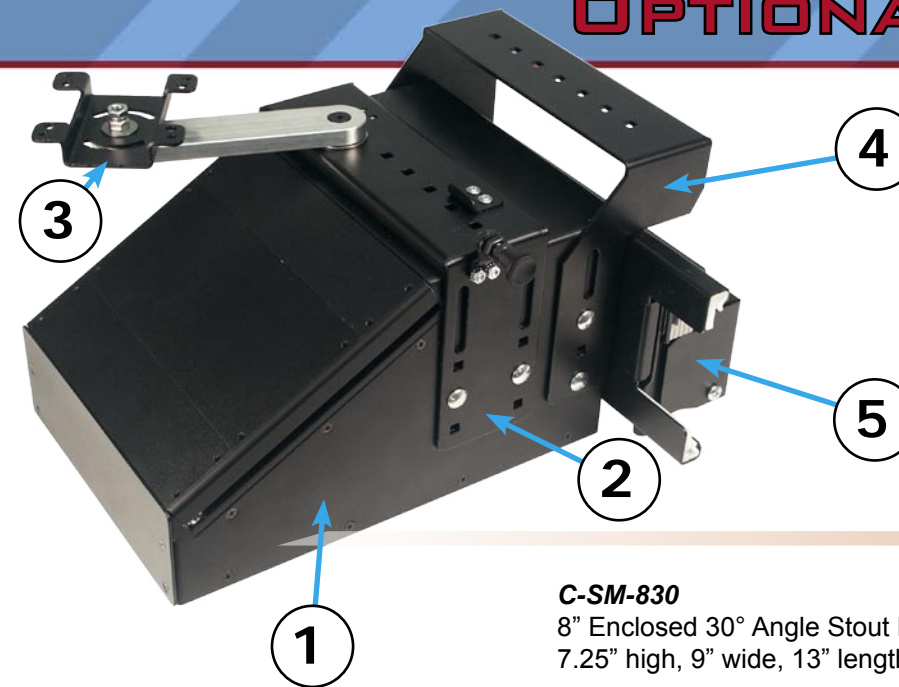
C-SM-830 shown with Dell Latitude Laptop, and Pentax PocketJet printer



DISTRIBUTED BY
TERRITORIAL SUPPLIES, INC.
PO BOX 474 * COUNCIL, ID 83612
800-221-7702 * 208-253-0085 F
WWW.TERRITORIALSUPPLIES.COM

OPTIONAL EQUIPMENT

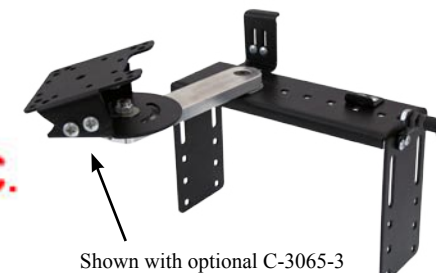
Sold Separately



- Assembled Part Breakdown:
- 1 C-SM-830 (Housing only)
 - 2 C-SM-SA-1
 - 3 C-3082-1
 - 4 C-SM-MMP
 - 5 C-PMS

C-SM-830

8" Enclosed 30° Angle Stout Mount Series Console Housing
7.25" high, 9" wide, 13" length, 7.75" max. depth, min. depth 3.5"



Shown with optional C-3065-3

C-SM-SA-1

Mounting Bracket Complete with Swing Arm Adapter for Stout Mount & Standard 9" wide Consoles

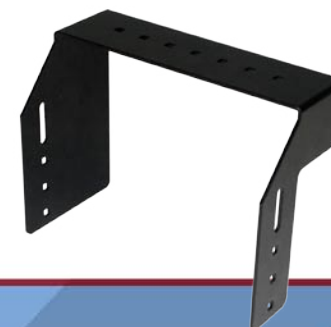
- 9" wide; 11 gauge steel with welded corners
- Solid 1/2" machined aluminum swing arm
- Spring pin locks arm in stored position
- Mounts to C-SM Series Console Platform
- Accepts all tilt/swivel or hat brackets
- Includes Dash Saver Bracket Assembly (C-DSB)



C-SM-SA

Universal Mounting Bracket for Stout Mount & Standard 9" wide Consoles

- 9" wide; 11 gauge steel with welded corners
- Mounts to C-SM Series Console Platform
- Accepts all tilt/swivel or hat brackets



C-SM-MMP

Monitor Mounting Bracket for Stout Mount & Standard 9" wide Consoles

- 9" wide; 11 gauge steel with welded corners
- Mounts to C-SM Series Console Platform
- Accepts all tilt/swivel or hat brackets (ordered separately)
- Specifically designed for monitor mount brackets (C-3522 Series)